

# Martindale-Brightwood Housing Survey



STEPHANIE YARIAN  
IUPUI STUDENT CAPSTONE PROJECT

# Background



In 2009, a sanitation and deterioration survey was conducted by IUPUI Environmental Policy students which suggested that the neighborhood needed lead abatement programs for lead paint, continued Neighborhood Cleanup Days, and expedited demolition of abandoned structures. However, no consideration was taken for residents concerns about sanitation and deterioration.



# Purpose



- Develop survey criteria
- Develop a tool to prioritize deterioration and sanitation conditions
- Assist in formulation an action plan with the survey
- Encourage future surveys for comparison

# Problems with Recommendations



- Already existing programs
- Did not address actual causes of problems
- Not very representative of neighborhood (especially commercial areas)
- No clear survey protocol

# New Survey



- Protocol for conducting survey
- Block survey sample to be more representative
- Representative of the residential and commercial properties in the neighborhood
- Community input (Neighborhood Criteria)
- Analysis specific for community

# Criteria Surveyed



## *Deterioration Criteria:*

Foundation Condition  
Siding/paint Condition  
Roof Condition  
Windows/doors Condition  
Chimney Condition  
Gutters/downspouts Condition  
Porch Condition  
Steps Condition  
Fence Condition  
Outside Building Condition

## *Sanitation Criteria:*

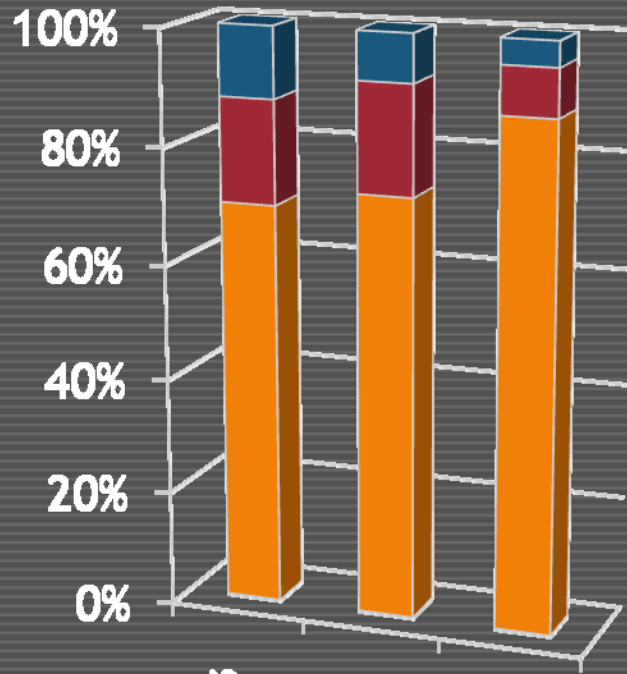
Litter  
Large rubbish  
Yard waste

## *Neighborhood Criteria:*

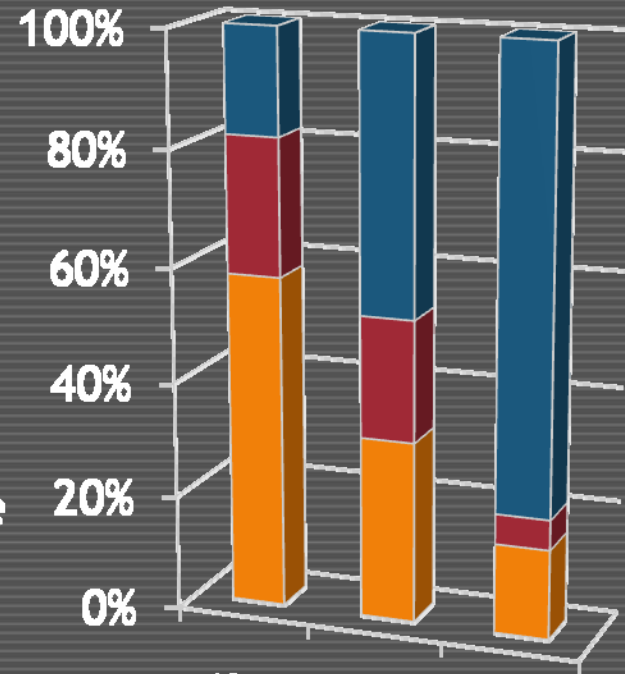
Abandoned homes  
Street Condition  
Sidewalk Condition  
Alley Condition



# Residential Homes vs. Abandoned Homes



■ Poor  
■ Moderate  
■ Good



Large Rubbish

Gutters/downspouts

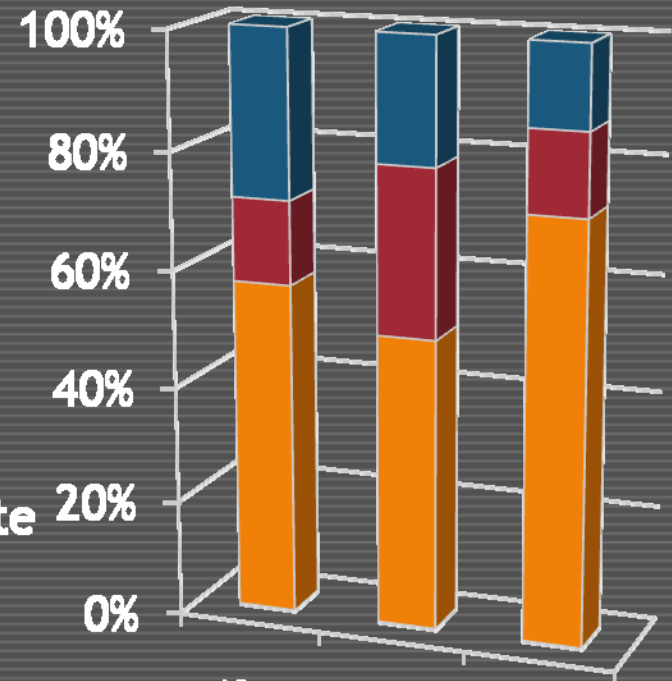
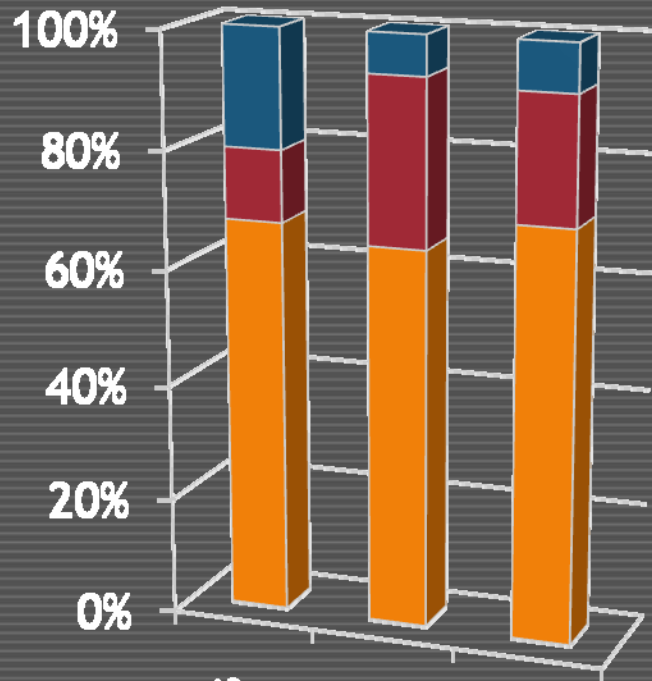
Windows/doors

Large Rubbish

Gutters/downspouts

Windows/doors

# Commercial Occupied vs. Commercial Abandoned



- Poor
- Moderate
- Good

# Recommendations



- Partnering with the Indianapolis Neighborhood Housing Partnership (INHP) to gain access to the \$29 million in Neighborhood Stabilization Program funds
- Urge local officials to implement an expedited process for demolishing abandoned structures
- Reporting abandoned structure and activities that happen on or around these structures to the MCHD
- Continue and expand Neighborhood Cleanup Days

# Questions?



Thank you!