



# The Green Power Option from IPL

Green Congregations  
Workshop

January 31<sup>st</sup>, 2009

*Greening your power is...well...a breeze.*

**greenpower**  
option from IPL

Want to make a clean, renewable energy choice for your home or business? Now it's easier than ever. With the Green Power Option, you can direct Indianapolis Power & Light Company (IPL) to purchase energy from environmentally friendly renewable resources - like wind and biomass/landfill gas facilities.

Join the effort to develop renewable energy. By adding a small premium to your monthly payment, you can buy energy from cleaner sources that are continually replenished. Just as small change can make a big difference.

Visit [IPLpower.com](http://IPLpower.com) to learn more about your power to go green.



“Many people and organizations are willing to pay for electricity that is produced on their behalf using cleaner, renewable sources of generation. These buyers often find renewable electricity attractive for its environmental and greenhouse gas reduction benefits when compared to conventional fossil fuel-based electricity generation.”

– EPA’s Green Power Partnership publication



# How Can an Individual or Organization Support Renewable Energy?

1. Build/own a renewable energy facility—wind or solar PV.
2. Purchase Renewable Energy through a broker from a large-scale renewable energy facility.
  - ❖ Dell, Cisco, Pepsi, large corporations
3. Participate in a utility “green” program like IPL’s Green Power Option.



# What is The Green Power Option?

- An optional program that allows IPL customers to support renewable energy.
- Available since 1998; interest & participation have increased dramatically in last 2-3 years.
- IPL purchases renewable energy on behalf of our participating customers.



# How Does It Work?

- Customers decide what percentage of their monthly electric usage to enroll: 10%, 25%, 50% or 100%.
- The percentage is used to determine the incremental amount added to their IPL bill.
- Participating customers can cancel or change their enrollment at any time.



## How Does It Work? (cont.)

- Current premium is \$0.0065/kilowatt-hour.
- Premium is based upon the cost to IPL to purchase renewable energy, plus admin and marketing expenses.
- Premium can adjust twice/year, based on approval by IURC.
  - Has never been higher than \$0.009/kWh.

# How does IPL buy the renewable energy?



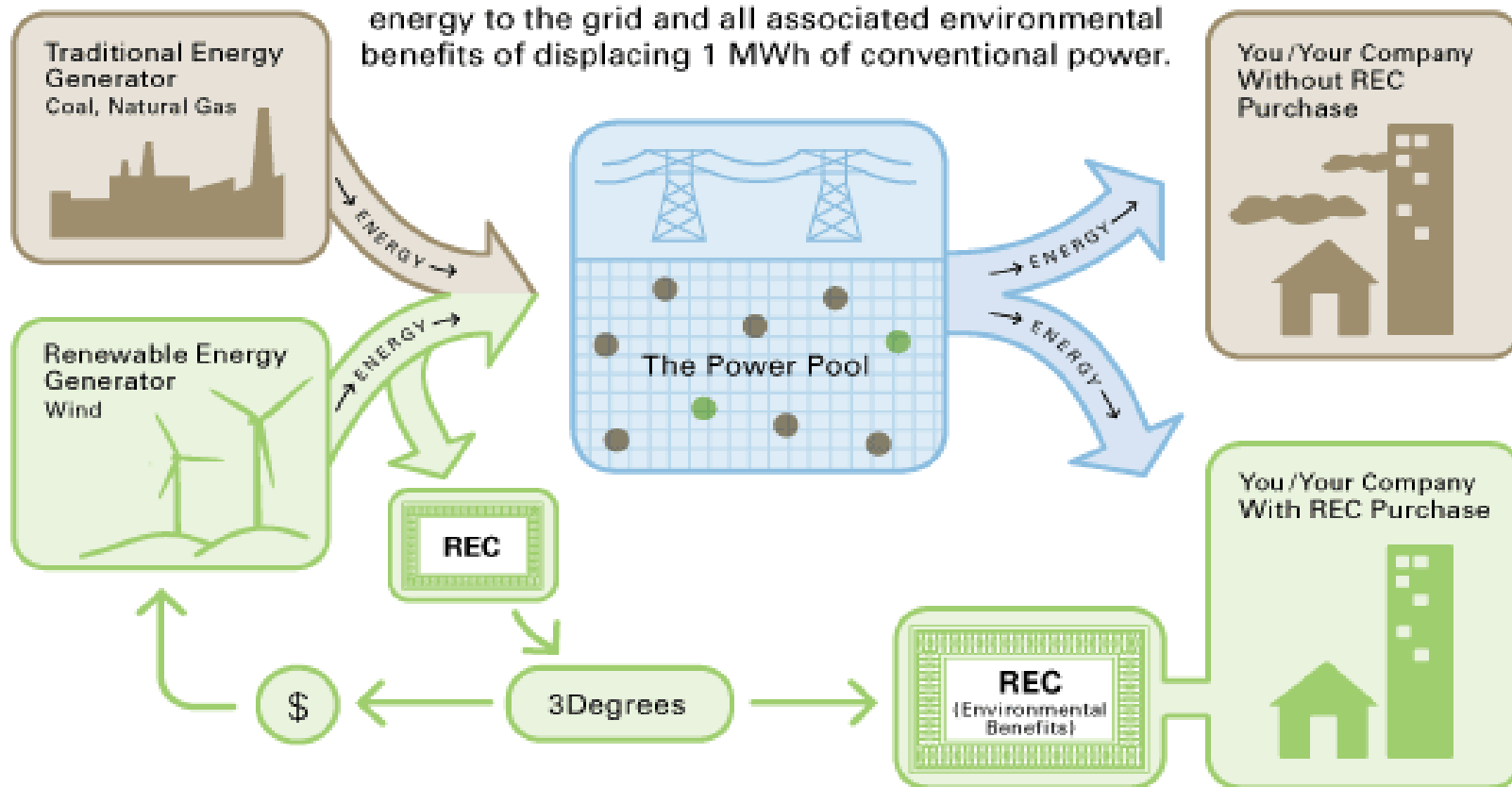
- *IPL purchases Renewable Energy Certificates, or RECs.*
- *RECs have become the “currency” for renewable energy markets and are an important tool for buyers of green power nationwide.*



A REC represents the environmental attributes of one megawatt-hour of renewable electricity generation.

## WHAT IS A RENEWABLE ENERGY CERTIFICATE (REC)?

A REC represents delivery of 1 MWh of renewable energy to the grid and all associated environmental benefits of displacing 1 MWh of conventional power.



3Degrees markets Green-e® Energy Certified Renewable Energy Certificates



# So, what does it cost?

“Typical” residential customer using 1000 kWh per month:

$$1000 \text{ kWh} \times \$0.0065/\text{kWh} = \$6.50/\text{month}$$



# Green Power Comparisons

	Previous 12-months consumption (kWh)	Previous 12-months bill amount (without Green)	10%	25%	50%	100%
Church 1	43,600	\$3903	\$28	\$71	\$142	\$283
Church 2	163,140	\$15,112	\$106	\$265	\$530	\$1060
Church 3	2,364,750	\$146,013	\$1537	\$3843	\$7685	\$15,371



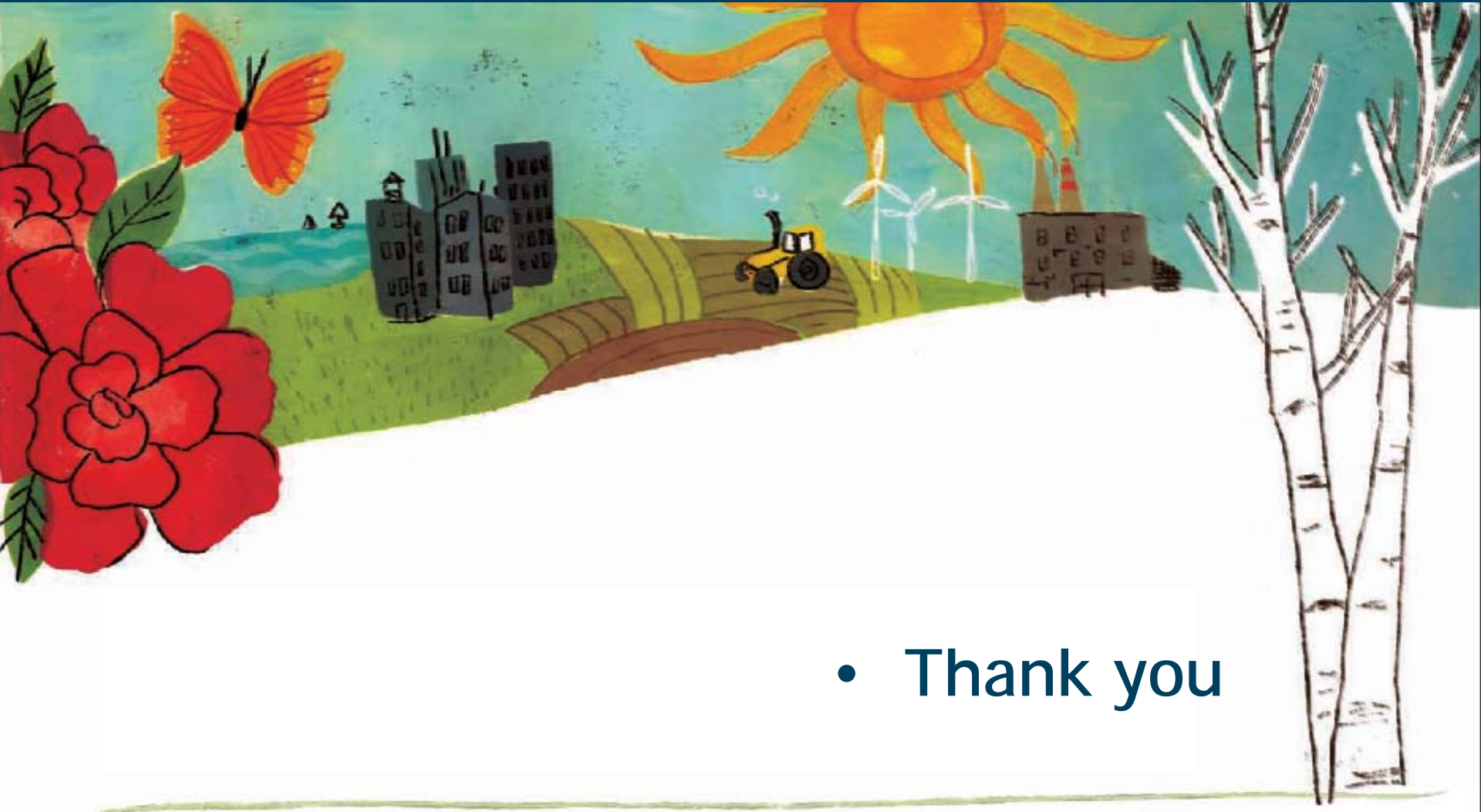
# Benefits

- Sharing your enrollment with your “stakeholders” .
- Reducing your church’s “carbon footprint” :

	Metric Tons CO2/Yr	100% Green Power = Cars off the roads for one year
Small Church	30	7
Medium Church	115	27
Large Church	2,137	391



# Questions?



- Thank you